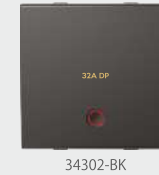




arcus®

Fine Work of Arc

A
SERIES



CODE White/Black	DESCRIPTION	MRP White/Black	PKG
SP Switches HSN CODE: 8536			
33101-WH 34101-BK	10AX 1 Way Switch	143.00 156.00	20
33102-WH 34102-BK	10AX 2 Way Switch	192.00 211.00	20
33103-WH 34103-BK	10AX 1 Way Switch With LED	204.00 224.00	20
33104-WH 34104-BK	20A 1 Way Switch (ISI)	214.00 235.00	20
33105-WH 34105-BK	20A 1 Way Switch With LED (ISI)	262.00 289.00	20
33106-WH 34106-BK	10A Bell Push Switch	192.00 211.00	20
33107-WH 34107-BK	10A Bell Push Switch With LED	204.00 224.00	20
33108-WH 34108-BK	10A Bell Push Switch "Key" Symbol	192.00 211.00	20
33201-WH 34201-BK	10A Bell Push Switch (2M)	213.00 234.00	10
33202-WH 34202-BK	10A Bell Push Switch With LED (2M)	240.00 263.00	10
33203-WH 34203-BK	20A 2Way Switch (2M)	267.00 307.00	10
DP Switches HSN CODE: 8536			
33302-WH 34302-BK	32A D.P. Switch With LED (ISI)	399.00 439.00	10
Sockets HSN CODE: 8536			
33401-WH 34401-BK	6A, 2 Pin F/R Socket	149.00 164.00	20 ▲
33402-WH 34402-BK	10A, Multi Socket	187.00 204.00	10 ▲
33402-WH-I 34402-BK-I	6A, 3 Pin Socket	206.00 224.00	10
33403-WH 34403-BK	10A & 20A, Twin Socket	352.00 388.00	10 ▲
33403-WH-I 34403-BK-I	6/16A, Twin Socket	370.00 407.00	10
33404-WH 34404-BK	6, 10, 13A Combi Socket	352.00 388.00	10 ▲
▲ Available Till Stock			
Fan & Dimmers HSN CODE: 8536			
33501-WH 34501-BK	Mini EME 120/280V	554.00 608.00	10
33502-WH 34502-BK	Mega EME 120/280V	732.00 805.00	10
33503-WH 34503-BK	Mini Dimmer 300W, 240V, 50Hz (300W - Incandescent load 150W - LED load w/ dimmable driver)	554.00 608.00	10
33504-WH 34504-BK	Mega Dimmer 600W, 240V, 50Hz (2M) (600W - Incandescent load 300W - LED load w/ dimmable driver)	732.00 805.00	10
Accessories HSN CODE: 8536			
33510-WH 34510-BK	Blanking off Plate Single (2pcs)	78.00 90.00	40
33511-WH 34511-BK	TV Outlet	176.00 193.00	20
33512-WH 34512-BK	Cord Outlet	143.00 157.00	20
33513-WH 34513-BK	AV Connector	723.00 796.00	10
33514-WH 34514-BK	HDMI Socket	1163.00 1277.00	20
33520-WH 34520-BK	Night Lamp	123.00 135.00	20
33521-WH 34521-BK	Fuse Unit	181.00 200.00	20
33523-WH 34523-BK	Bell Indicator	321.00 353.00	20
33524-WH 34524-BK	Buzzer	288.00 318.00	20

☐ HSN: 8538 ☑ HSN: 8504 ☒ HSN: 8531



34526-BK 34527-BK 34528-BK



34522-BK 34529-BK 34530-BK



34525-BK 34551-BK 34552-BK 34553-BK



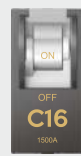
34601-BK 34602-BK 34603-BK 34604-BK 34605-BK



34606-BK 34607-BK 34608-BK



34609-BK



34623-BK



34631-BK

CODE White/Black	DESCRIPTION	MRP White/Black	PKG
Accessories HSN CODE: 8536			
33525-WH 34525-BK	Volume Controller	425.00 469.00	10
33526-WH 34526-BK	Down Light (2M)	439.00 464.00	10
33527-WH 34527-BK	Down Light (3M)	604.00 695.00	04
33528-WH 34528-BK	Down Light 3 Colours (4M) (Yellow / Daylight / White)	695.00 764.00	05
33522-WH 34522-BK	USB Charger 2.5A	1550.00 1704.00	10
33529-WH 34529-BK	Arcus 18W PD "C" type USB Charger	2915.00 3021.00	20
33530-WH 34530-BK	Arcus 18W A&C type USB Charger	3583.00 3689.00	20
33551-WH 34551-BK	RJ-11 With Shutter Single	176.00 193.00	20
33552-WH 34552-BK	RJ-45 Single Receptor	176.00 193.00	20
33553-WH 34553-BK	RJ-45 Single Cat 6	732.00 805.00	10

HSN: 9405

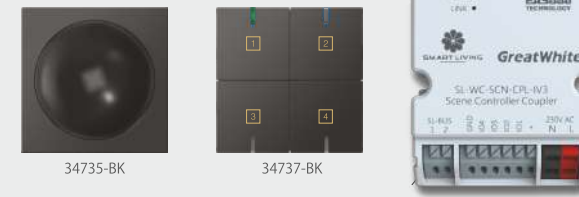
CODE White/Black	DESCRIPTION	MRP White/Black	PKG
Hospitality HSN CODE: 8536			
33601-WH 34601-BK	DND Switch With LED	305.00 334.00	10
33602-WH 34602-BK	MMR Switch With LED	305.00 334.00	10
33603-WH 34603-BK	DND/MMR Indicator With LED	357.00 404.00	10
33604-WH 34604-BK	"Open" Curtain Switch 2M	192.00 211.00	10
33605-WH 34605-BK	"Close" Curtain Switch 2M	192.00 211.00	10
33610-WH 34610-BK	Shaver Socket (3M)	4800.00 4900.00	05
33607-WH 34607-BK	32A Mechanical Key Tag	938.00 1030.00	08
33608-WH 34608-BK	Key Tag	176.00 193.00	40
33609-WH 34609-BK	30A Time Delay Switch	3339.00 3672.00	04

CODE White/Black	DESCRIPTION	MRP White/Black	PKG
MCB Protection (SP 'C' Series) HSN CODE: 8536			
33621-WH 34621-BK	6A SP 'C' Series	454.00 499.00	10
33622-WH 34622-BK	10A SP 'C' Series	454.00 499.00	10
33623-WH 34623-BK	16A SP 'C' Series	454.00 499.00	10
33624-WH 34624-BK	20A SP 'C' Series	454.00 499.00	10
33625-WH 34625-BK	25A SP 'C' Series	454.00 499.00	10
33626-WH 34626-BK	32A SP 'C' Series	454.00 499.00	10

CODE White/Black	DESCRIPTION	MRP White/Black	PKG
MCB Protection (DP 'C' Series) HSN CODE: 8536			
33631-WH 34631-BK	16A DP 'C' Series	942.00 1036.00	10
33632-WH 34632-BK	20A DP 'C' Series	942.00 1036.00	10
33633-WH 34633-BK	25A DP 'C' Series	942.00 1036.00	10
33634-WH 34634-BK	32A DP 'C' Series	942.00 1036.00	10



34731-BK 34732-BK 34733-BK 34734-BK



34735-BK 34737-BK 33740-WH 33741-WH



34711-BK 34712-BK 34714-BK



34723-BK 34724-BK



34716-BK 34717-BK



34718-BK



34721-BK 34722-BK 34715-BK

CODE White/Black	DESCRIPTION	MRP White/Black	PKG
Home Automation HSN CODE: 8536			
33731-WH 34731-BK	2 Channel Relay Switch	***	*** 01
33732-WH 34732-BK	2 Channel Dimming Switch	***	*** 01
33733-WH 34733-BK	Curtain Motor Controller	***	*** 01
33734-WH 34734-BK	RGB Light Controller	***	*** 01
- 34735-BK	IR Blaster and Learner	***	*** 01
33736-WH -	Bus Power Supply	***	*** 01
33737-WH 34737-BK	Scene Controller	***	*** 01
33738-WH 34738-BK	Scene Controller With Bus Power Supply	***	*** 01
33739-WH 34739-BK	Scene Controller With Occupancy Sensors Input	***	*** 01
33740-WH -	Scene Controller - Third Party Coupler	***	*** 01
33741-WH 34741-BK	Door Latch Controller	***	*** 01

*** Prices Available on Request



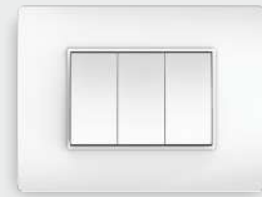
CODE White/Black	DESCRIPTION	MRP White/Black	PKG
Wi-Fi enabled Touch Switches HSN CODE: 8536			
34711-BK	2 Gang 1 Way Smart Touch Switch	***	*** 04
34712-BK	4 Gang 1 Way Smart Touch Switch	***	*** 04
34714-BK	2 Gang 2 Way Smart Touch Switch	***	*** 04
34724-BK	20A Smart Switch	***	*** 04
34716-BK	Smart Fan Regulator	***	*** 04
34717-BK	Smart Light Dimmer	***	*** 04
34723-BK	Smart Curtain Switch	***	*** 04
34718-BK	IR-Blaster (UniversalWi-FiRemote)	***	*** 01

CODE White/Black	DESCRIPTION	MRP White/Black	PKG
Touch Switches (without Wi-Fi) HSN CODE: 8536			
34721-BK	DND/MMR/Bell-Outside 2M	***	*** 04
34722-BK	DND/MMR/Bell-Inside 2M	***	*** 04
34715-BK	1 Gang Bell Switch	***	*** 04

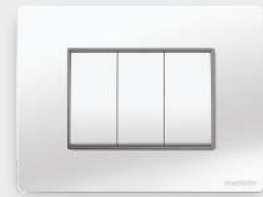
*** Prices Available on Request



TECHNO POLYMER(TP) ARC PLATES



TP ARC WHITE -T01



TP ARC WHITE
(NICKEL BEZEL)-T02



TP ARC METALIC GREY-T03



TP ARC MATT GUN METAL-T04



TP ARC MATT BRONZE-T05



TP ARC MATT BLACK-T06

METAL ARC PLATE



METAL ARC BLACK
(BLACK BEZEL)-M11



METAL ARC CHAMPAGNE
(NICKEL BEZEL)-M12

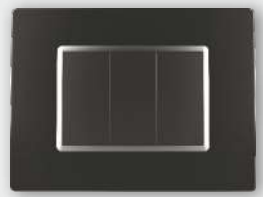


METAL ARC BROWN
(BLACK BEZEL)-M13

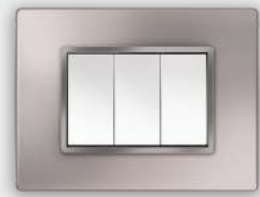
GLASS ARC PLATE



GLASS ARC MATT WHITE
(NICKEL BEZEL)-G21



GLASS ARC MATT BLACK
(NICKEL BEZEL)-G22



GLASS ARC MATT BLUSH
(NICKEL BEZEL)-G23



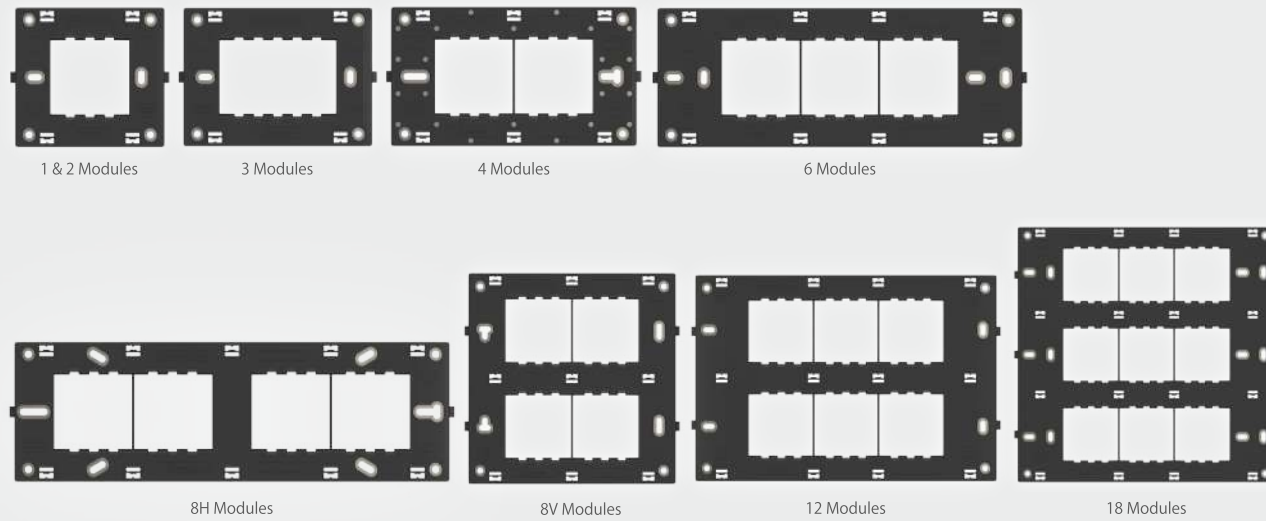
GLASS ARC GLOSSY BLACK
(NICKEL BEZEL)-G24

ARC PLATES (Without Support Frames)

MODULE ▶ PLATES ▼	1M CODE	2M CODE	3M CODE	4M CODE	6M CODE	8M V CODE	8M H CODE	12M CODE	16M CODE	18M CODE
TP arc White	34801-T01	34802-T01	34803-T01	34804-T01	34806-T01	34808-T01	34828-T01	34812-T01	34816-T01	34818-T01
MRP ₹ ▶	123.00	123.00	156.00	190.00	288.00	358.00	358.00	427.00	482.00	536.00
TP arc White (Nickel Bezel)	34801-T02	34802-T02	34803-T02	34804-T02	34806-T02	34808-T02	34828-T02	34812-T02	34816-T02	34818-T02
MRP ₹ ▶	129.00	129.00	163.00	197.00	301.00	374.00	374.00	445.00	502.00	560.00
TP arc Metallic Grey	34801-T03	34802-T03	34803-T03	34804-T03	34806-T03	34808-T03	34828-T03	34812-T03	34816-T03	34818-T03
TP arc Matt Gun Metal	34801-T04	34802-T04	34803-T04	34804-T04	34806-T04	34808-T04	34828-T04	34812-T04	34816-T04	34818-T04
TP arc Matt Bronze	34801-T05	34802-T05	34803-T05	34804-T05	34806-T05	34808-T05	34828-T05	34812-T05	34816-T05	34818-T05
TP arc Matt Black	34801-T06	34802-T06	34803-T06	34804-T06	34806-T06	34808-T06	34828-T06	34812-T06	34816-T06	34818-T06
MRP ₹ ▶	224.00	224.00	270.00	311.00	428.00	552.00	552.00	646.00	710.00	775.00
PKG ▶	10	10	10	10	10	05	10	05	05	05
Metal arc Black (Black Bezel)	34801-M11	34802-M11	34803-M11	34804-M11	34806-M11	34808-M11	34828-M11	34812-M11	-	34818-M11
Metal arc Champagne (Nickel Bezel)	34801-M12	34802-M12	34803-M12	34804-M12	34806-M12	34808-M12	34828-M12	34812-M12	-	34818-M12
Metal arc Brown (Black Bezel)	34801-M13	34802-M13	34803-M13	34804-M13	34806-M13	34808-M13	34828-M13	34812-M13	-	34818-M13
MRP ₹ ▶	604.00	604.00	727.00	898.00	1256.00	1538.00	1538.00	2371.00	-	3229.00
Glass arc White (Nickel Bezel)	34801-G21	34802-G21	34803-G21	34804-G21	34806-G21	34808-G21	34828-G21	34812-G21	-	34818-G21
Glass arc Matt Black (Nickel Bezel)	34801-G22	34802-G22	34803-G22	34804-G22	34806-G22	34808-G22	34828-G22	34812-G22	-	34818-G22
Glass arc Matt Blush (Nickel Bezel)	34801-G23	34802-G23	34803-G23	34804-G23	34806-G23	34808-G23	34828-G23	34812-G23	-	34818-G23
MRP ₹ ▶	1127.00	1127.00	1468.00	1855.00	2207.00	2466.00	2466.00	3169.00	-	3728.00
Glass arc Glossy Black (Nickel Bezel)	34801-G24	34802-G24	34803-G24	34804-G24	34806-G24	34808-G24	34828-G24	34812-G24	-	34818-G24
MRP ₹ ▶	1127.00	1127.00	1468.00	1855.00	2207.00	2466.00	2466.00	3169.00	-	3728.00
PKG ▶	05	05	05	05	05	05	05	05	-	05

HSN CODE: 8538

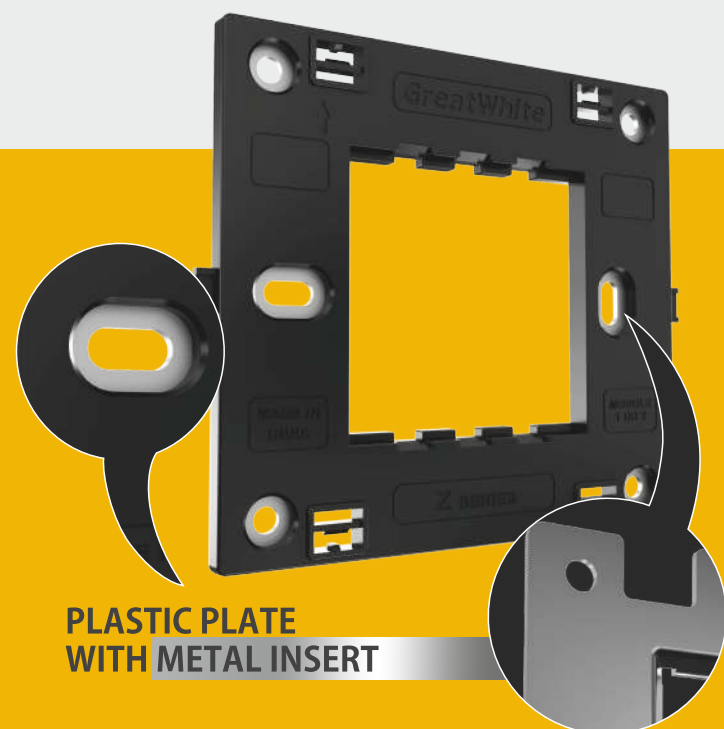
Z-SERIES SUPPORT FRAME



Z-SERIES SUPPORT FRAME

MODULE ▶	1M & 2M	3M	4M	6M	8V M	8H M	12M	18M
DESCRIPTION ▶	1M / 2M Z Series Support Frame	3M Z Series Support Frame	4M Z Series Support Frame	6M Z Series Support Frame	8M Z Series Support Frame (Vertical)	8M Z Series Support Frame (Horizontal)	12M Z Series Support Frame	18M Z Series Support Frame
CODE ▶	35501-Z	35503-Z	35504-Z	35506-Z	35508-Z	35528-Z	35512-Z	35518-Z
MRP □ ▶	167.00	229.00	251.00	318.00	419.00	419.00	576.00	726.00
PKG ▶	20	20	20	20	10	10	10	10

HSN CODE: 8538



PLASTIC PLATE WITH METAL INSERT

DESIGNED TO HAVE A METAL SANDWICH
GIVING OPTIMUM PERFORMANCE AGAINST BACK FORCE OF WIRE AND ENVIRONMENTAL EFFECT.

